

Adjustable Tilt Solar Racking System

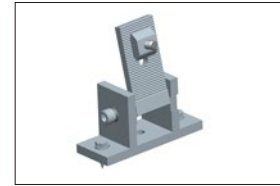
Adaptable, economical mounting on almost all flat roof coverings

- Fixed angle or adjustable angle for your requirement.
- Flexible feet options for roof penetrating or standing seam clamps.
- Anodized 6005-T5 aluminum extrusion offers high durability.
- Pre-assembled components simplified installation.



Features

Install site	Flat roofs (corrugated sheet metal, asbestos), open terrain
Roof slope	Up to 45°
Building height	Up to 20m
Wind speed	Up to 88m/s(316.8kmh/196.9mph)
Tilt angle	Fixed, 10-15°, 15-30°, 30°-60°
Standard	AS/NZ1170.2:2011, JIS C 8955:2011, other international standards
Supporting profile	Minimum two rails supporting each panel
Distance between footings	Depending on load condition, refer to manual
PV module	Framed
Module orientation	Landscape, portrait
Size of module array	Any layout up to site condition
Material	Anodized aluminum 6005 T5, stainless steel 304
Color	Natural, powder coated
Module widths	Maximum 1.0m
Module lengths	Maximum 2.0m
Warranty	10 years limited warranty, refer to warranty doc



Front leg



Back leg



Rail

- Roof structure to be checked as suitable before installation.



End clamp



Inter clamp



Rail splice



Flat roof



10
Years
Warranty



Framed module



Unframed module



Orientation landscape



Orientation portrait

